

Building a Better Future

Peterborough's Children and Young People Plan

2009-2012

Peterborough Children's Trust Partnership Board

**Draft
Version 7.0**

1. Introduction

Welcome to Peterborough's Children and Young People Plan. The government have asked all local areas to produce a plan to make sure that children can:

- Be healthy
- Stay safe
- Enjoy and achieve
- Make a positive contribution
- Achieve economic wellbeing

This plan is owned by Peterborough's Children's Trust Partnership. Many different organisations work with children and young people in Peterborough. To bring about long lasting change we know we have to work together. This is why the Children's Trust was created, to help us work together and improve our services.

In preparing this plan we have talked to lots of people: professionals, parents, carers and most importantly of all, children and young people.

The aim of this document is to set out where we're trying to get to (our vision), what we're going to tackle first to get there (our priorities) and which areas we need to focus upon to meet those priorities (our key areas of focus).

There are several different sections to the Children and Young People Plan. This is to allow people to find the information they

need without having to search through a very large document. The elements of the plan are:

- **The Overview Plan** (this document) introduces the plan and sets out our key priorities for children and young people in Peterborough.
- **The Annual Report** examines how well we are doing in meeting the needs of children and young people, what difference our work has made and what we need to do over the coming year.
- **The Needs Assessment** contains lots of information about our children and young people, including data, the results of consultations and professional research. This is used to inform our key areas of focus, which tells us what we need to do to improve the lives of children and young people.

All of these documents will be available on our website www.peterborough.gov.uk/cypp

Peterborough's Children and Young People Plan is closely linked to Peterborough's Sustainable Community Strategy. This document sets out our joint priorities for the city as a whole. We have signed a Local Area Agreement (LAA) with government, which sets out how as a city we will improve the lives of our citizens. The key targets from the Local Area Agreement are highlighted throughout this plan.

2. Our Vision

Our vision is simple: to create an environment where children and young people are safe and healthy, can enjoy what life has to offer them and have ambition and aspirations, where they achieve their goals and make a positive contribution for themselves, their family and their community.

In order to achieve this vision, we're going to have to do a number of things. We need to make sure that children, young people and their families are at the centre of the work we do and that we deliver services in the way that they need them. This may require some of our services to join up to work more effectively and become more accessible.

Our vision is for all children and young people and we need to make sure that those who aren't doing so well are supported to achieve their potential. We need to work together to make sure that the most vulnerable are kept safe and we need to make sure we can tackle problems early so that they don't become more serious.

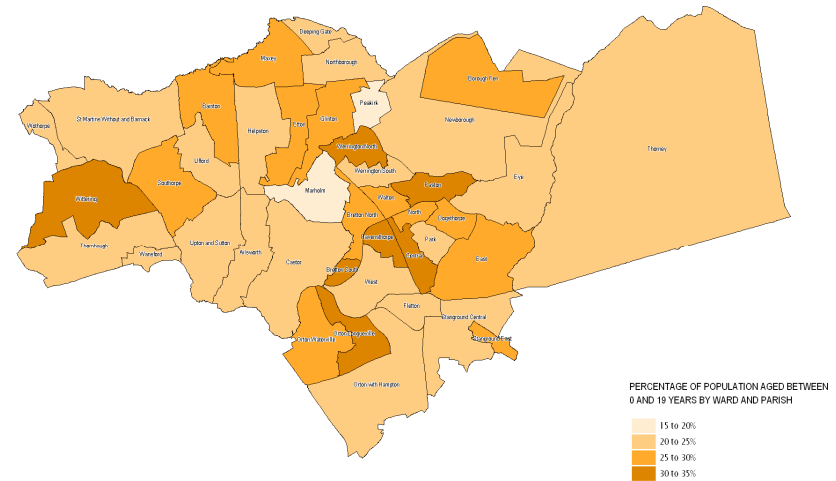
We can't do this on our own. We need to work with all of our communities to make a real difference. Most of all, we need to keep listening to children and young people to make sure we're doing things right.

3. What is Peterborough like?

Peterborough is a mix of old and new. It is a long established city, with a cathedral dating back to pre-Norman times, but it was also a new Town in the 1960s and in going through a period of rapid growth that will continue to transform the city over the coming years.

Our city is home to 158,000 people, 42,000 of which are aged between 0–19. This means Peterborough has a high percentage of children and young people when compared to other areas across the UK.

In order to meet the changing needs of our city's young people, two new secondary schools opened in September 2007: The Thomas Deacon Academy and The Voyager school. Since the Children and Young People Plan was last produced, these two schools have been open for one academic year and there is much to celebrate. The Voyager has seen the amalgamation of pupils from two very different schools and in a recent Ofsted inspection was praised for its clear vision, strong school community and the outstanding contribution of the school to its local community. The Thomas Deacon Academy has won three awards and a commendation in recognition of innovative achievements nationally and internationally.



Map showing 0-19 year olds as a percentage of total population
Source: 2001 Census

Peterborough's children and young people come from very diverse backgrounds. We have both rural and urban communities, our population includes a wide range of ethnic backgrounds and statistically we know there is big difference in levels of deprivation across the city.

During 2008, it became clear we are living in increasingly difficult times. The effects of the current economic downturn are becoming more apparent and the full force of the recession is likely to be felt by all of our communities in the coming months and years. We know a large number of people across the city have lost their jobs, businesses have closed and figures released by JobCentre Plus have shown a rise in the number of claimants

across all occupations during late 2008 and early 2009. The Citizens' Advice Bureau has reported an increase in the numbers of new clients seeking advice on debt, housing, employment and family law. Children and young people are directly affected by changes in the economy and we need to make sure they have the support and help they need.

We face some real challenges in Peterborough: life expectancy is too low, as is educational attainment; teenage pregnancy and obesity rates are too high and there are too many of our young people who are not in education, employment or training (NEET). However, Peterborough is a dynamic place where many of our children and young people achieve amazing things and we want all of our children and young people to achieve their potential.

4. Our key priorities

At the heart of the Children and Young People Plan are our key priorities. These are the areas where we need to do more to ensure that children and young people achieve better outcomes. Each priority is underpinned by several key areas of focus. These are the areas where we need to jointly strive to improve. The priorities, and key areas of focus, are summarised below:

Be Healthy

1. Children and young people are supported to make healthy choices, so that, working together, we can cut rates of **teenage pregnancy**, reduce levels of **obesity** and tackle **substance misuse**, focussing particularly upon the use of illegal drugs and alcohol misuse.

2. Children and young people have the best possible emotional health, ensuring that all children and young people have **emotional wellbeing** and access to comprehensive **Child and Adolescent Mental Health** services which meet their particular needs.

Stay Safe

3. Children and young people have a safe environment to grow up in, free from the threat of **domestic violence** and living in **cohesive** communities where people get on.

4. Children and young people are safeguarded from harm. **Safeguarding** is the responsibility of everyone, protecting children from abuse, harm and neglect. We need to ensure our **Child Protection, Contact, Intake and Assessment** systems are effective to identify those at risk of harm. We need to protect vulnerable children, such as **young runaways**, provide **specialist family support** to families in need and, for those children who are in care, ensure they have **stability and security**.

Enjoy and Achieve

5. Children and young people have enjoyable and appropriate learning opportunities, raising attainment and achievement from the **Early Years Foundation Stage to Key Stage 5**, whilst **narrowing the gap** between those who do least well and the rest and ensuring effective learning for those **outside of mainstream education**. We want children to be free from **bullying** and able to enjoy learning through **play and informal learning opportunities**.

Make a Positive Contribution

6. Children and young people are engaged and supported within their communities, supported during key **transitions** and changes in their lives, with parents receiving the right **parenting support** to help them give their children the best chances, with children **participating** in decisions that effect them, and contributing to society through **active citizenship**.

7. Children and young people resist engaging in crime and anti-social behaviour by supporting young people before they **enter the youth justice system**, tackling **anti-social behaviour** and helping those who have offended to avoid **re-offending**.

Achieve Economic Wellbeing

8. Children and young people achieve their potential and succeed economically, with the right opportunities through the **14-19 agenda**, so that they have good **qualifications by age 19** to prepare them for work; ensuring young people are in **education, employment and training (EET)**, with access to the **transport** they need. We also want to ensure children, young people and families affected by **poverty** are given the support they need.

9. All young people have access to appropriate housing, focussing in particular upon known groups of **vulnerable young people**, such as care leavers, young offenders and teenage mothers.

Underpinning Priorities

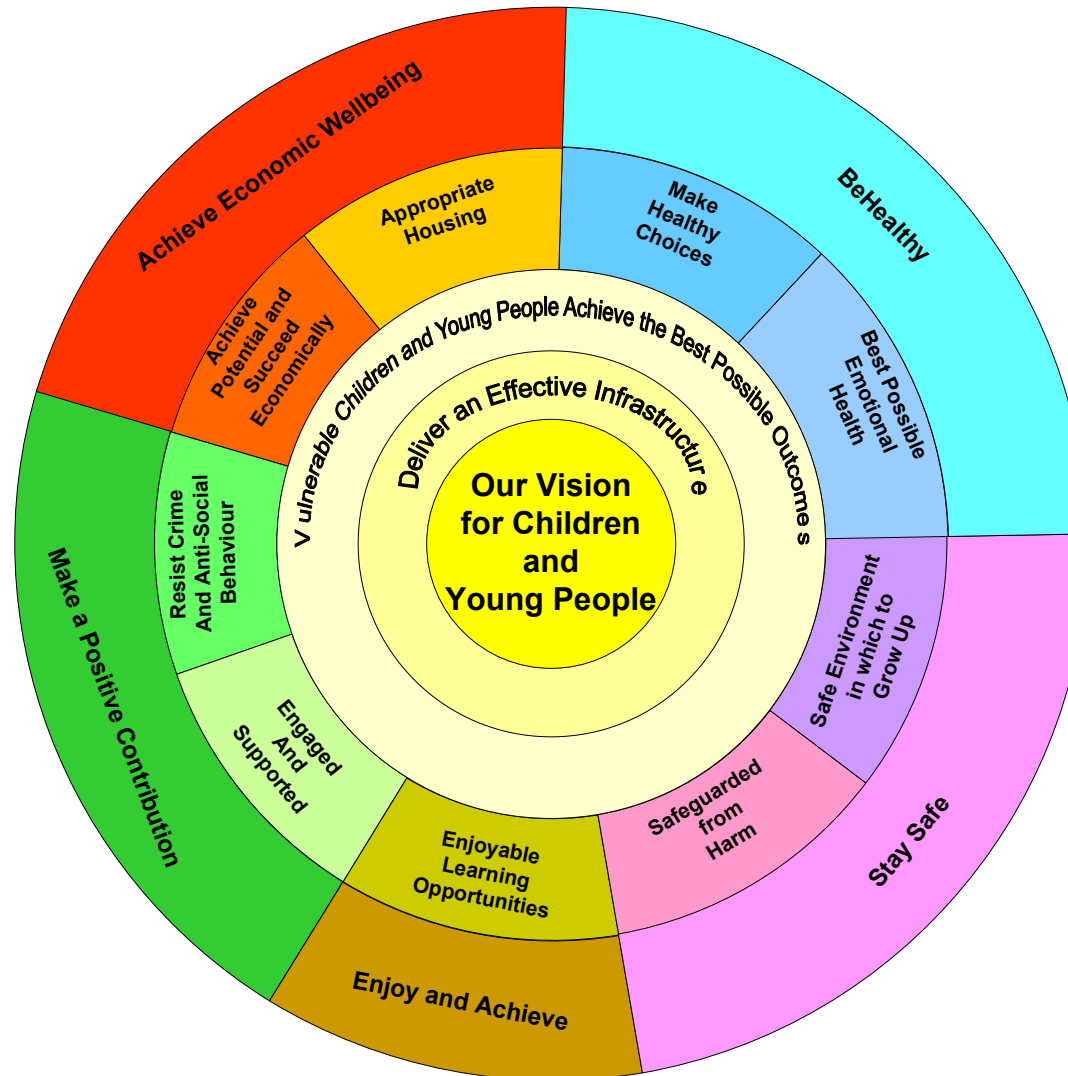
We believe that, if we can make a real impact in these priority areas, then we will improve the lives of all our children and young people in the five areas that the government has targeted:

- Be healthy
- Stay safe
- Enjoy and achieve
- Make a positive contribution
- Achieve economic wellbeing

We have set up a partnership for each of these five areas and they have been tasked with delivering the priorities set out in this plan. All of our priorities and the partnerships responsible for them are shown in the following diagram:

10. Vulnerable children and young people are supported to achieve the best possible outcomes. We have identified some groups of children and young people who face a number of challenges, including **New Arrivals, Children in Care, children with disabilities, young carers** and **children and young people from Gypsy and Traveller communities**. We want all of our services to work together to ensure that these children and young people can achieve their potential in all aspects of their lives.

11. Deliver an effective infrastructure to ensure services can continue to improve outcomes for children and young people. We need to make sure we have the right systems in place to make sure we can make a difference. We want truly **integrated delivery of services**, based in local areas. To do this, we will need to have common, **integrated processes** across agencies, a highly skilled and effective **workforce**, clear **governance** that provides accountability and decision making and **strategic joint commissioning** to make sure we deliver services that meet the needs of children. We want to ensure our services deliver **Value for Money**, always taking full account of **equality and diversity**.



Peterborough's Children and Young People Plan – 'Onion Diagram'

We will talk a bit more about these partnerships later, but in the following chapters, we will tell you a little bit more about each of these five areas, and about our priorities.

5. Be Healthy

Introduction

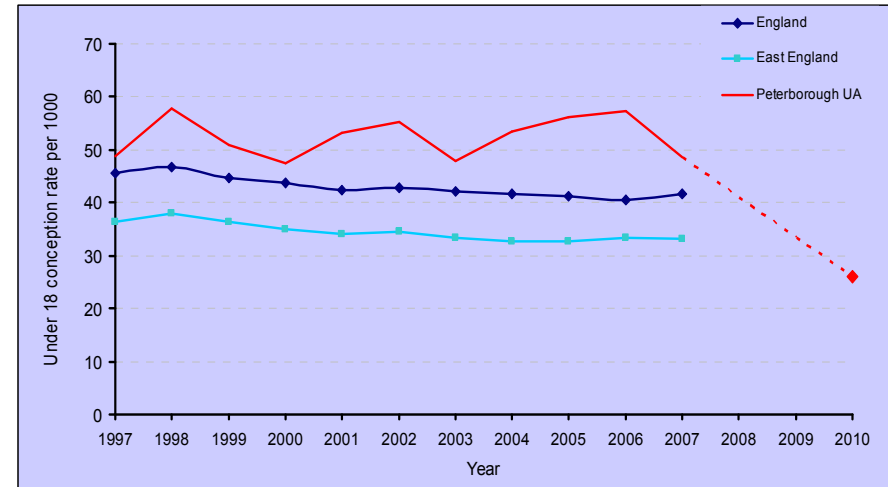
We know that children and young people will find it harder to achieve their full potential if they suffer from poor health. That is why we need to make sure that children and young people have the right support and services. This includes being physically healthy, being mentally and emotional healthy, being sexually healthy, living healthy lifestyles and choosing not to drink alcohol or take illegal drugs.

Sometimes, being healthy is about making the right decisions and doing the right things. We need to make sure that children and young people have the right information, support and guidance to help them make those important decisions. It is always better to prevent ill-health than cure it so we need to make sure we have the right preventative services in place. When children and young people do suffer from poor health, we need to make sure they get access to services that are right for them as soon as possible.

What's going on in Peterborough?

What does the data tell us?

- In 2007, teenage conception rates fell to 48.5 conceptions per 1000 15-17 girls. This was a reduction from 57.4 in 2006, but is still above the national average of 41.7. We have been set a target of reducing our rates by 55% from the rate in 1998, and we still have a long way to go:



Local and National Teenage Pregnancy Rates

- Peterborough's rate of childhood obesity is higher than the national average. During the 2007/08 school year, 12.6% of children measured in the reception class of primary school were obese, compared to 9.8% nationally. Similarly, 19.1% of children measured in Year 6 were obese, compared to 17.4% nationally.
- In a national survey, 10.7% of Peterborough's young people reported taking drugs or being drunk more than once in the preceding four weeks. This was just below the national average (10.9%).
- A national survey of emotional health revealed that Peterborough's children have poorer emotional health than the national average, scoring 62.9% of positive responses compared to 63.3% nationally. The survey found children in Peterborough were less likely to have one or more good friends.

What have you told us?

Peterborough has conducted a wide-scale Health Related Behaviour survey of children and young people. Some of the results are:

- 17% of children have 'low' to 'medium' self esteem. 80% of Year 10 boys reported that they 'often feel lonely at school' and 28% of respondents reported that 'there are lots of things about myself that I would change'.
- Worrying, 11% of Year 10 girls admitted to drinking alcohol on three or more days out of the previous seven. 7% of Year 10 boys also admitted to frequent drinking. 9% of both boys and girls reported drinking more than 15 units of alcohol in the last week.
- 42% of Year 10 girls boys are 'certain' they know someone personally who takes illegal drugs. A further 17% are 'fairly sure' they know someone.
- 54% of pupils questioned did not know where they could get condoms free of charge and 58% of pupils were unaware that there was a special contraception and advice service for young people available in the city.

The TellUs survey is a national survey of children and young people. Some of the results are:

- 11% of children do not consider themselves very healthy.
- Only 23% of children eat the recommended five or more portions of fruit and vegetables a day.
- Peterborough's children are less likely to be involved in sport and exercise than the national average.
- Joshua Lovell was recently elected as the city's new Youth MP. He campaigned on several issues, and in particular highlighted a need for being earlier education about the effects of alcohol and improved sex education.

What have our inspectors told us?

Every year, services for children and young people are inspected by Ofsted. In 2008, the inspectors identified a number of major strengths around Be Healthy:

- Good performance on the health assessments of looked after children. The proportion of looked after children receiving a dental and annual health check has increased and at 92% is higher than similar councils and the national average.
- Good partnership with schools in promoting healthy lifestyles. 59 of the 73 schools have achieved Healthy School status with almost all schools participating, which is well ahead of target.
- There is good access to child and adolescent mental health services by vulnerable groups.

However, they also identified a number of important weaknesses and areas for development:

- The rate of teenage conceptions remains higher than that of similar councils and the national average.
- The prevalence of obesity amongst children is higher than the national average.
- A low proportion of young people are accessing specialist substance misuse services.

What have we already done?

A huge amount of work has been undertaken to address these areas, including:

- Following an extensive analysis through Peterborough's innovative 'solution centre', we have been undertaking a number of pilot projects to evaluate different approaches to tackling teenage conceptions. This includes launching Peterborough's first pharmacy based Emergency Hormonal Contraceptive scheme, running targeted courses to raise aspirations and provide sexual health advice, and delivering a 'baby real' project, where girls can find out what it is really like to care for a young baby. The pilots are being evaluated, and will inform how we deliver services in the future.
- We have used Peterborough's 'solution centre' to examine the issue of childhood obesity. The solution centre brings together experts from across services to examine new ways to tackle the issue in Peterborough.
- We have improved support for mothers to breastfeed, providing a daily drop in clinic at the city's maternity unit and training 36 women to act as peer supporters. In recognition of this work, the Primary Care Trust and the Maternity Unit have achieved Stage 1 of UNICEF's 'Baby Friendly' accreditation.
- We have raised the number of young people being screened for Chlamydia through a range of initiatives including outreach work, and a new text request service which offers young people an easy way to have a postal testing kit sent to them.
- Construction is underway at the Ida Darwin site in Cambridge to increase the facilities available for young people with mental health difficulties

- Progress in delivering Healthy Schools continues to be excellent, with 89% of schools achieving National Healthy Schools Status.
- Access to Child and Adolescent Mental Health Services (CAMHS) for children in care has improved across tiers 2 and 3 with the recruitment of two part time staff members with dedicated sessions for children in care

A full report about the work that has been undertaken to improve the health of children and young people will be available in our Annual Report. This will be published on our website, www.peterborough.gov.uk/cypp.

What are our priorities and key areas of focus for 2009?

Having looked at the data on Be Healthy, we have identified the following priorities and key areas of focus:

1: Children and young people are supported to make healthy choices

- Teenage pregnancy
- Obesity
- Substance misuse

2: Children and young people have the best possible emotional health

- Comprehensive CAMHS
- Emotional wellbeing of all children and young people

Who is responsible for improving 'Be Healthy'?

The Be Healthy outcome is owned by the Be Healthy Partnership, which reports into the Children's Trust Partnership Board.

The Be Healthy Partnership is co-chaired by Peterborough's Director of Public Health, and the Director of Children's Services and Nursing from the Cambridge and Peterborough Foundation Trust. This partnership is responsible for ensuring that work is done to address the priorities and key areas of focus identified within the Children and Young People Plan.

The Be Healthy Partnership will be publishing an Annual Workplan, which will explain what actions they will be taking to ensure that we make the improvements needed. This Annual Workplan will be published as part of our Annual Report on our website, at www.peterborough.gov.uk/cypp.

How will we measure whether we're improving?

The government have identified 198 performance indicators against which they will monitor how well services are improving the lives of people who live in Peterborough. The Be Healthy Partnership will be responsible for monitoring those relating to the health of children and young people. In relation to the identified priorities and key areas of focus, they will be required to closely monitor the following national indicators:

- **NI 50 – Emotional Health of Children**
- NI 51 – Effectiveness of child and adolescent mental health services (CAMHS)
- NI 55 - Obesity amongst primary school age children in reception year
- **NI 56 – Obesity amongst primary school age children in year 6**

- NI 58 – Emotional and behaviour health of looked after children
- **NI 112 – Under 18 Conception Rate**
- NI 115 – Substance misuse by young people

The indicators that are in bold, above, are some of the key indicators that are in our Local Area Agreement and have been jointly agreed as priorities between all partners in the city and central government.

As well as monitoring the national indicators, the Be Healthy Partnership will continually review local information about the needs of children and young people to ensure that we respond to and tackle issues as soon as possible.

6. Stay Safe

Introduction

The safety of children and young people is of absolute importance for Peterborough. We want to make sure that in Peterborough, our children and young people are:

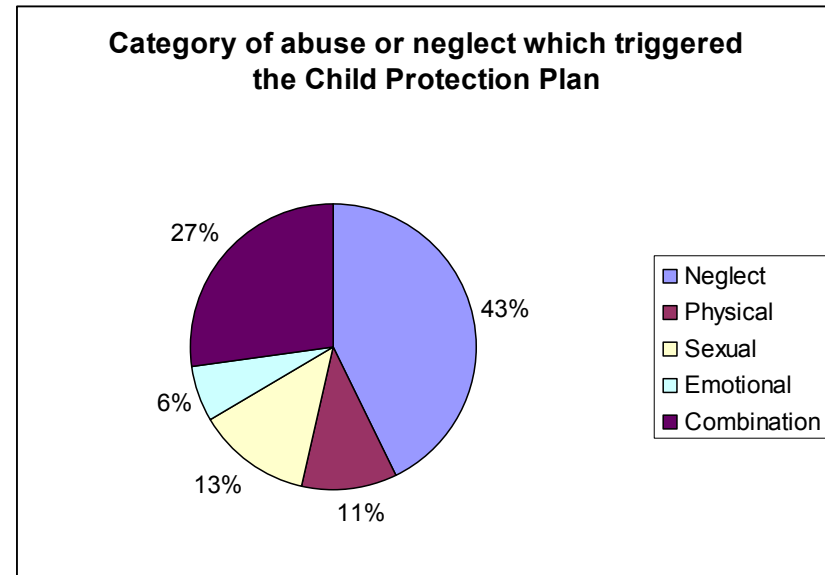
- Safe from maltreatment, neglect, violence and sexual exploitation
- Safe from accidental injury and death
- Safe from bullying and discrimination
- Safe from crime and anti-social behaviour in and out of school
- Have security, stability and are cared for

The only way to achieve this is for all those who work with children and young people to work together and to co-ordinate our efforts. Safeguarding children is everybody's responsibility and we need to make sure that, from ensuring safe recruitment to ensuring the effective sharing of important information, we have the right processes in place to protect children.

What's going on in Peterborough?

What does the data tell us?

- At the end of February 2009, there were 110 children with child protection plans. Of these, just under half had child protection plans due to neglect.



- By the end of February 2009, 60% of our initial assessments and 61.3% of our core assessments had been completed within recommended timescales. This was a rise from 36% and 40.6% respectively since April 2007, but is still below our targets and national averages.
- 99% of looked after children cases and 100% of child protection cases were reviewed within recommended timescales.
- Early indications of 2008/09 data show a decrease in children and young people under the age of 20 being victims of crime, with 685 being recorded between 1 April and 30 September 2008 compared to 889 in the same period the previous year.
- The stability of children in care placements has improved. In February 2009, only 3.1% of children had had three or more

placements in the previous 12 months, a reduction from 17.9% in April 2007 and lower than the national average.

- Between 2000/01 and 2005/06, Peterborough had the highest rate of hospital admission following assault by a partner, parent or spouse in the East of England. The rate was three times higher than the regional average.
- Reporting by the police in 2007 found between 120 and 190 children per month who were present during recorded incidents of Domestic Violence.
- The peak age group of children reported missing from home in Cambridgeshire Constabulary Northern Division was 13-15 years. This is similar to the peak age for children running away nationally.
- Research was completed into young runaways in early 2008. The research examined runaways over a six month period during which 113 young people ran away from home.

What have you told us?

In our TELLUS survey, 30% of respondents reported feeling 'a bit' or 'very unsafe' on public transport. 25% reported feeling unsafe in their local area. However, only 10% felt unsafe in school and 61% felt very safe, significantly higher than the national average (55%).

Focus groups carried out to support the review of the Children and Young People Plan consistently highlighted the issue of bullying and the impact of local environments on how safe people feel, including street lighting, busy roads, broken glass, graffiti and dog mess. References were made to particular areas that some young people felt as unsafe such as underpasses. Older children and gang culture was also highlighted as an issue.

What have our inspectors told us?

Every year, services for children and young people are inspected by Ofsted. In 2008, the inspectors identified a number of major strengths around Stay Safe:

- Good reduction in the numbers of children who have been killed or seriously injured on the roads when compared with the England average.
- All children who are the subject of a child protection plan are allocated to a qualified social worker and all are reviewed on time.
- The proportion of looked after children who have been adopted is higher than that of similar councils and the national average.
- The proportion of looked after children who were reviewed on time exceeded that of similar councils and the national average.

However, they also identified a number of important weaknesses and areas for development:

- The rate of social care referrals and re-referrals is higher than that in similar councils and the national average.
- Performance on the timeliness of initial and core assessments remains below that of similar councils and the national average.
- The proportion of looked after children remains higher than that of similar councils and the national average.

What have we already done?

- Inspections carried out in 2008 have shown the significant progress made to ensure children stay safe. Ofsted's 2008 Annual Performance Assessment scored Stay Safe as '2' – satisfactory, which was an improvement on 2007. Similarly, both Adoption and Fostering services improved their inspection ratings in 2008, both being rated satisfactory. Ofsted particularly praised the way the fostering service helped children in care be healthy, enjoy and achieve and make a positive contribution.
- We have co-located our social care teams in a modern, fit for purpose office at Bayard Place. This is not only more efficient, but is helping our services work better together.
- We have reviewed all our services against the Haringey Joint Area Review and are implementing an action plan to ensure that we learn any lessons relevant to Peterborough.
- In order to reduce the number of social care vacancies, we have run an extremely successful workforce development project. This has helped reduce our vacancy rate from 31% in April 2006 to just 14% in February 2009.
- Partners have been working together to deliver 'Operation Stay Safe', where police, youth workers and social workers remove vulnerable young people from the streets late at night and provide them with the support they need.
- A School's Community Cohesion Group has been launched to develop projects and good practice that promotes community within schools.
- The Safer Schools Project continues to be developed, with officers working with children and young people to reduce crime, promote cohesion, tackle bullying and racism and promoting personal safety.

A full report about the work that has been undertaken to improve

the safety of children and young people will be available in our Annual Report. This will be published on our website, www.peterborough.gov.uk/cypp.

What are our priorities and key areas of focus for 2009?

3: Children and young people have a safe environment in which to grow up

- Domestic violence
- Cohesion

4: Children and young people are safeguarded from harm

- Safeguarding
- Young runaways
- Child protection - contact, intake and assessment
- Specialist family support
- Stability and security of Children in Care

Who is responsible for improving Stay Safe?

The Stay Safe outcome is owned by the Stay Safe Partnership, which reports into the Children's Trust Partnership Board.

The Stay Safe Partnership is co-chaired by the Head of Children's Social Care, Peterborough City Council, and the Divisional Commander, Cambridgeshire Constabulary. This partnership is responsible for ensuring that work is done to address the priorities and key areas of focus identified within the Children and Young People Plan.

The Stay Safe Partnership will be publishing an Annual Workplan, which will explain what actions they will take to ensure that we make the improvements needed. This Annual Workplan will be published as part of our Annual report on our website at www.peterborough.gov.uk/cypp

In addition to the work of the Stay Safe Partnership, other partnerships within the city will be important in delivering in this area. The Safer Peterborough Partnership will be leading the delivery of work through their Community Safety Plan. The Greater Peterborough Partnership's Community Cohesion Board will lead cohesion work across the city. The Peterborough Safeguarding Children Board has an important role in ensuring that children and young people across the city stay safe. Finally, several of the areas within Stay Safe are included within our Local Area Agreement. These areas have key delivery plans which will be monitored by the Children's Trust and the Greater Peterborough Partnership.

You can find out more about these partnerships and their work at www.peterborough.gov.uk/cypp.

How will we measure if we are improving?

The Stay Safe Partnership will be responsible for monitoring those National Indicators relating to the safety of children and young people. In relation to the identified priorities and key areas of focus, they will be required to closely monitor the following national indicators:

- **NI11 % people who believe people from different backgrounds get on well together**
- **NI32 Repeat incidents of domestic violence**
- **NI59 – % initial assessments for children's social care carried out within seven working days of referral**
- **NI60 - % of core assessment for children's social care that were carried out within 35 working days of their commencement**
- NI62 Stability of placements of looked after children: number of moves

- **NI63 Stability of placements of looked after children: length of placement**
- NI 64 Child protection plans lasting 2 years or more
- NI 65 Children becoming the subject of a Child Protection Plan for a second or subsequent time
- NI66 Looked after children cases which were reviewed within required timescales
- NI67 Child protection cases which were reviewed within required timescales
- NI68 Referrals to children's social care going on to initial assessment
- NI69 Children who have experienced bullying
- NI71 Children who have run away from home/care overnight

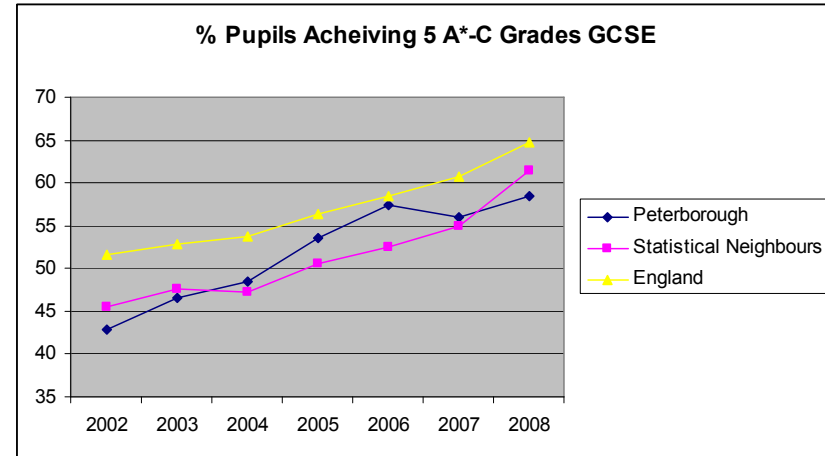
The indicators that are in bold, above, are some of the key indicators that are in our Local Area Agreement and have been jointly agreed as priorities between all partners in the city and central government.

As well as monitoring the national indicators, the Stay Safe Partnership will continually review local information about the needs of children and young people to ensure that we respond to and tackle issues as soon as possible.

7. Enjoy and achieve

Introduction

Having high quality learning and education is a key way in which our children and young people can achieve their goals and potential in life. We need to work together to ensure that all children and young people have the opportunity to enjoy education and achieve their potential. This means making sure that children are ready for school, that they attend and enjoy school, that they achieve their best at both primary and secondary school, and also that they have the best possible personal and social development, taking advantage of informal learning opportunities such as cultural and heritage, play and recreation.



What's going on in Peterborough?

What does the data tell us?

- The percentage of children who achieved a 'good' level across the Early Years Foundation Stage in 2008 was 42.3%, a 9% increase on 2006.
- Provisional data from Key Stage 2 shows that the percentage of children achieving a Level 4 qualification in English and Maths at Key Stage 2 fell to 66% in 2008 (from 68%). This is 6% below the provisional national average.
- 10% fewer children in Peterborough achieved 5 or more A*-C grades including English and Maths compared to the national average. However, there was a rise in the percentage of children achieving 5 A*-C grades not including English and Maths

- There is significant variation in the performance in exams of different groups, with children from some ethnic backgrounds, those living in some poorer parts of the city, and those with a statement of special educational needs all performing more poorly than their peers. Conversely, other groups performed much better than average.
- Peterborough's secondary school persistent absence rate dropped from 6.9% to 4.8% in 2007/08. This puts us below national average (5.6%) and all of our statistical neighbours. Overall secondary absence fell to below the national average but overall primary absence rose slightly, although it is only 0.02% higher than the national average.
- Through the TELLUS survey, 50.3% of children reported being bullied in the past 12 months. This is slightly higher than the national average, although it appears our schools deal well with bullying, and perhaps encourage reporting (see below).

What have you told us?

- Results from our TELLUS 3 Survey show that 61% of respondents reported feeling very safe at school, compared to the national average of 55%. 20% of children and young people in Peterborough felt their school dealt 'very well' with bullying, compared to the national average of 14%.
- 11% of children say they enjoy school, 4% higher than the national average. 27% say they always learn a lot at school, again, 4% higher than the national average.
- However, 20% of children reported that they wanted more help from family and friends with homework.
- 80% of children reported that 'more fun/interesting lessons' would help them do better at school.
- Children and young people appear to have low aspirations in Peterborough. When asked about their aspirations after leaving school, the results indicate that Peterborough's young people are less inclined to study to gain a place at university (48% compared to 54% nationally).

What have our inspectors told us?

Every year, services for children and young people are inspected by Ofsted. In 2008, the inspectors identified a number of major strengths around Enjoy and Achieve:

- Good analysis and use of Early Years Foundation Stage data is leading to improving standards of achievement in childcare and early education settings. The proportion of childcare settings and nursery education classes receiving a good grading in inspections has risen by 4% and 23% respectively.
- At Key Stage 2 outcomes continue to improve. Targeted work with schools has led to steady improvement. For example, there are gains in all subjects at Level 4 with mathematics and science results rising above similar councils.

- The proportions of looked after children and young people leaving care with five or more GCSEs are well above similar councils and national comparators.

However, they also identified a number of important weaknesses and areas for development:

- The standards children reach in reading, writing and mathematics at Key Stage 1 are well below those in similar councils and the national figures.
- Progress is too variable in Key Stages 1 and 3 resulting in a series of peaks and troughs in children and young people's attainment.
- Outcomes for some vulnerable groups such as children and young people with learning difficulties and/or disabilities and those from Gypsy and Travelling communities are below national comparators.

What have we already done?

- Bushfield Community College has been confirmed as Peterborough's second academy. It will open on its existing site in September 2009, before moving to new buildings in September 2012. The council is continuing to work with Partnerships for Schools under the government's 'Building Schools for the Future' programme to provide new facilities at Orton Longueville and Stanground.
- In July, our READ.WRITE.*inspire* literacy initiative earned 'local authority of the month' recognition in the National Year of Reading's campaign to change the culture of reading in Britain.
- Early Years settings were introduced to the revised 'Early Years Foundation Stage Record of Achievement' in spring 2008. This document charts children's progress throughout the Early Years Foundation Stage, ensuring collaborative

working as well as providing appropriate information on transition into school.

- A range of targeted programmes on communication, language and literacy development are being delivered in schools to help improve educational attainment at Key Stages 1,2 and 3.
- A School Improvement Partner has been provided to every school in Peterborough to provide support and challenge to schools, with a particular focus upon supporting the effectiveness of school leadership teams in targeting underperformance and using tracking data effectively.
- The 'Being BRAVE' anti-bullying strategy continues to be implemented, including raising awareness of the Safe to Learn guidance and conducting a widespread Anti-bullying Alliance questionnaire with young people from across the city.
- The Education Welfare Service has been re-designed to deliver more effective services to schools to assess and record attendance and develop strategies for improvement. The success of this approach has been demonstrated through the reduction in persistent absence rates in Peterborough's schools.

A full report about the work that has been undertaken to ensure children and young people enjoy and achieve will be available in our Annual Report. This will be published on our website, www.peterborough.gov.uk/cypp.

What are our priorities and key areas of focus for 2009?

5: Children and young people have enjoyable and appropriate learning opportunities

- Achievement and attainment from the Early Years Foundation Stage to Key Stage 5
- Raising the aspirations of children and young people
- Bullying

- Narrowing the gap
- Children outside mainstream education
- Play and informal learning opportunities

Who is responsible for improving Enjoy and Achieve?

The Enjoy and Achieve outcome is owned by the Enjoy and Achieve Partnership, which reports into the Children's Trust Partnership Board.

The Enjoy and Achieve Partnership is co-chaired by the Assistant Director – Learning & Skills, Peterborough City Council and Programme Director – Performance and Improvement, Peterborough City Council. This partnership is responsible for ensuring that work is done to address the priorities and key areas of focus identified which is done within the Children and Young People Plan.

The Enjoy and Achieve Partnership will be publishing an Annual Workplan, which will explain what actions they will take to ensure that we make the improvements needed. This Annual Workplan will be published as part of our Annual report on our website at www.peterborough.gov.uk/cypp

In addition to the work of the Enjoy and Achieve Partnership, other partnerships within the city will be important in delivering improvements in this area. In particular, the 14-19 Educational Planning Partnership will be leading the delivery of the important 4-19 reform agenda, which will fundamentally change the way young people access learning.

You can find out more about this partnerships and their work at www.peterborough.gov.uk/cypp.

How will we measure if we're making progress?

The Enjoy and Achieve Partnership will be responsible for monitoring those national indicators relating to this aspect of the lives of children and young people. In relation to the identified priorities and key areas of focus, they will be required to closely monitor the following national indicators:

- **NI 72 Achievement of at least 78 points across the Early Years Foundation Stage with at least 6 in each of the scales in Personal and Social and Emotional**
- **NI73 Achievement at level 4 or above in both English and maths at Key Stage 2**
- **NI 75 Achievement of 5 or more A*-C grades at GCSE or equivalent including English and Maths**
- NI84 Achievement of 2 or more A*-C grades in Science GCSEs or equivalent
- NI87 Secondary school persistent absence rate
- **NI92 Narrowing the gap between the lowest achieving 20% in the Early Years Foundation Stage Profile and the rest**
- **NI93 Progression by 2 levels in English between Key Stage 1 and Key Stage 2**

- **NI94 Progression by 2 levels in Maths between Key Stage 1 and Key Stage 2**
- NI102 Achievement gap between pupils eligible for free school meals and their peers achieving the expected level at Key Stages 2 and 4
- NI104 The Special educational Needs (SEN)/non- SEN gap achieving Key Stage 2 English and maths threshold
- NI104 The Special educational Needs (SEN)/non- SEN gap achieving 5 A* - C GCSE inc. English and maths
- **NI107 Key Stage 2 attainment for black and minority ethnic groups**
- NI108 Key Stage 4 attainment for Black and minority ethnic groups

The indicators that are in bold, above, are some of the key indicators that are in our Local Area Agreement and have been jointly agreed as priorities between all partners in the city and central government.

As well as monitoring the national indicators, the Enjoy and Achieve Partnership will continually review local information about the needs of children and young people to ensure that we respond to and tackle issues as soon as possible.

8. Make a positive contribution

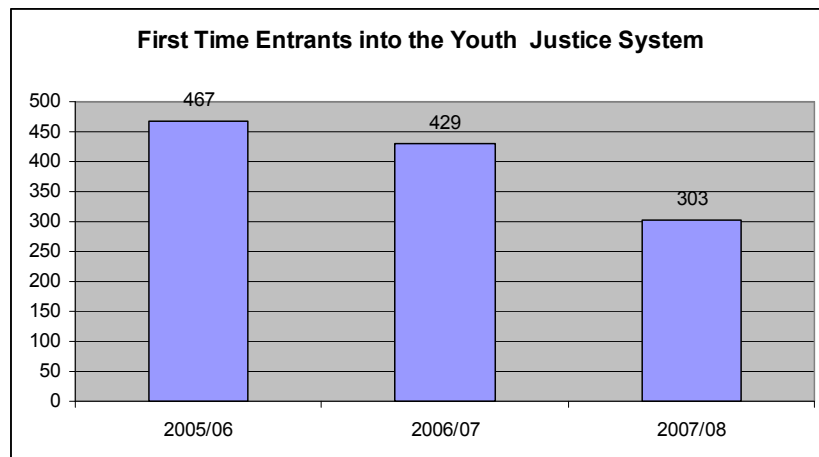
Introduction

It is important that we give children and young people opportunities to take an active part in, and make a positive contribution to, their communities. This means making sure they can engage in decision making about things that affect their lives. It means supporting the community and the environment to engage in law-abiding and positive behaviour, developing positive relationships with others and developing enterprising behaviour.

What's going on in Peterborough?

What does the data tell us?

- The number of first time entrants into the youth justice system has reduced significantly over the past three years.



- 65.5% of young people reported taking part in positive activities over the previous four weeks, compared to a national average of 69.5%.
- Peterborough is well on target to meet its national targets for delivering extended school and children's centre provision.

What have you told us?

- In the TELLUS survey, Peterborough did very well when it came to children and young people feeling that their views were taken into account during the decision making process. 7% said they thought they were listened to 'a great deal' compared to the national average of 4%, and 26% said 'a fair amount' compared to the national average of 22%. This demonstrates that children and young people feel influential in making decisions about the local area. Similarly, more children felt they were listened to in decisions about their school compared to national average.
- The Place Survey is a large scale community survey conducted by the Government. Participants are asked about how big a problem various elements of anti-social behaviour are, such as 'teenagers hanging around the streets' or 'vandalism'. When conducted in Peterborough, the overall score for anti-social behaviour being a problem was 20.5%, which was higher than our statistical neighbours, whose average was 19.27%.
- 58% of children said in the last year they had given their time to help a charity, a local voluntary group, a neighbour or someone else in the local area, which is slightly lower than the national average of 61%.

What have our inspectors told us?

Every year, services for children and young people are inspected by Ofsted. In 2008, the inspectors identified a number of major strengths around Make a Positive Contribution:

- Children and young people, including the most vulnerable, make a valuable contribution in shaping the future of services in Peterborough. For example, their elected representatives on the Youth Council inform and influence Cabinet policy and decision-making.
- Successful action is taken to identify children and young people at risk of participating in anti-social behaviour and to reduce numbers of those already involved. Partnership work in supporting young offenders is very effective resulting in a significant reduction in the rate of recidivism and rising numbers of young offenders involved in education, training and employment.
- Looked after children and young people play a full part in making decisions about their future and are listened to. For example, 'Viewpoint' enables looked after children to record their views of their care plans. Councillors meet with children and young people regularly to ensure their views are heard.

However, they also identified a number of important weaknesses and areas for development:

- Insufficient access to specialist services and out-of-school activities for some vulnerable children and young people, especially those who are hard-to-reach such as young carers.

What have we already done?

- In February 2009, the Peterborough's Youth Council (made up of representatives from Peterborough's secondary and special schools) debated the council's budget proposals, directly questioning and challenging the Head of Strategic Finance and Leader of the Council.
- The Multi-Systemic Therapy pilot was launched in August 2008. This work delivers intensive services to support and change families' behaviour. It is targeted at those children at risk of being taken into care and custody.
- Recruitment is underway to appoint three Parenting Co-ordinators who will provide support, advice and guidance to parents and carers.
- Two members of the Youth Council are attending Peterborough City Council's Children and Lifelong Learning Scrutiny Panel.
- The Youth Offending Service's overall performance, as assessed by the Youth Justice Board, was 76%. This placed Peterborough 27th out of 157 Youth Offending Services across the country
- The Youth Volunteering Strategy is being delivered, providing opportunities for young people to get involved in volunteering activities.

A full report about the work that has been undertaken to ensure children and young people can make a positive contribution will be available in our Annual Report. This will be published on our website, www.peterborough.gov.uk/cypp.

What are our priorities and key areas of focus for 2009?

6: Children and young people are engaged and supported within their communities

- Transitions
- Engagement, participation and active citizenship
- Universal and targeted parenting support

7: Children and young people resist engaging in crime and anti-social behaviour

- Reducing first time entrants to the youth justice system
- Reducing re-offending
- Reducing anti-social behaviour

Who is responsible for improving Make a Positive Contribution?

This outcome is owned by the Make a Positive Contribution Partnership, which reports into the Children's Trust Partnership Board.

The Make a Positive Contribution Partnership is co-chaired by the Assistant Director – Families and Communities, Peterborough City Council and the Chair of Voluntary Sector Forum. This partnership is responsible for ensuring that work is done to address the priorities and key areas of focus identified within the Children and Young People Plan.

The Make a Positive Partnership will be publishing an Annual Workplan, which will explain what actions they will take to ensure that we make the improvements needed. This Annual Workplan will be published as part of our Annual report on our website at www.peterborough.gov.uk/cypp

In addition to the work of the Make a Positive Contribution Partnership, other partnerships within the city will be important in delivering in this area. In particular, the Safer Peterborough

Partnership will be leading the delivery of work around anti-social behaviour through their Community Safety Plan. In addition, several of the areas within Make a Positive Contribution are included within our Local Area Agreement. These areas have key delivery plans which will be monitored by the Children's Trust and the Greater Peterborough Partnership.

You can find out more about these partnerships and their work at www.peterborough.gov.uk/cypp.

How will we measure if we're improving?

The Make a Positive Contribution Partnership will be responsible for monitoring those national indicators relating to that aspect of children and young people's lives. In relation to the identified priorities and key areas of focus, they will be required to closely monitor the following national indicators:

- **NI 17 Perceptions of anti-social behaviour**
- NI19 Rate of proven re-offending by young offenders
- NI 44 Ethnic composition of offenders on Youth Justice System disposals
- NI110 Young people's participation in positive activities
- **NI111 First time entrants into the youth Justice System aged 10-17**

The indicators that are in bold, above, are some of the key indicators that are in our Local Area Agreement and have been jointly agreed as priorities between all partners in the city and central government.

As well as monitoring the national indicators, the Make a Positive Contribution Partnership will continually review local information about the needs of children and young people to ensure that we respond to and tackle issues as soon as possible.

9. Achieve economic wellbeing

Introduction

Economic stability and security are important in ensuring that children and young people can achieve their potential. It has long been known that children from poorer backgrounds often do less well in education, health and their adult life. We need to ensure that families from these backgrounds have the support that they need to thrive.

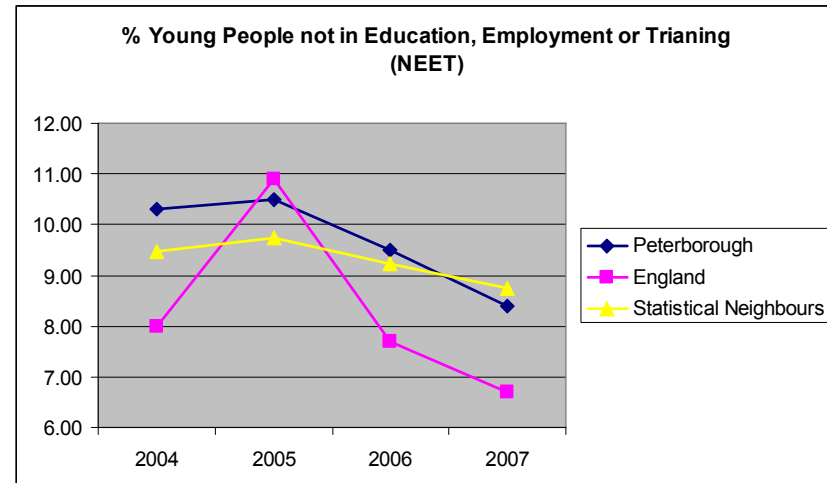
Achieving economic wellbeing is also about making sure that young people are ready for work, with the right skills, training and employment opportunities to have good careers.

In these difficult economic times, it is especially important that we ensure that we support families so that children and young people live in decent homes and have to transport and the services that they need.

What's going on in Peterborough?

What does the data tell us?

- The number of young people not in education, employment or training (NEET) has been falling over the past few years in Peterborough. However, provisional data for the end of 2008 suggests that this figure may rise to 9.1%.



- There are big variances in NEET levels, with poorer areas of the city having higher levels than those who are more affluent. Similarly, vulnerable groups, such as young people with learning difficulties or disabilities and teenage mothers, have very high NEET rates.
- Young people in Peterborough are less likely to have good qualifications than nationally. In particular, young people are less likely to have a Level 2 (equivalent qualification to 5 good GCSEs) or Level 3 (equivalent to A Level) qualifications by the time they are 19.
- Peterborough's Strategic Housing Market Analysis (SHMA) Needs Analysis 2007 found that a quarter of households in Peterborough (25.8%) contained children. Around 5% were lone parent households.
- Local homeless data shows that the most common cause of people who were found to be 'eligible, unintentionally homeless and in priority need' was that parents were no

longer willing or able to accommodate the individuals concerned, suggesting that these were primary young people.

What have you told us?

- The issue of transport has been identified as a key priority for both the Youth Council and the Youth MP.
- In our health related behaviour survey, a total of 58% of respondents worked for between two and five hours for money in the previous week.

What have our inspectors told us?

Every year, services for children and young people are inspected by Ofsted. In 2008, the inspectors identified a number of major strengths around Achieve Economic Wellbeing:

- Year-on-year improvement in the participation rate of 17-year-olds in education and training which is now closer to the national average.
- Good advice and support for looked after children and care leavers, through pathway plans and personal advisors, leading to very good rates of entry to education, employment and training.
- Good improvements in the standard of housing and support for care leavers and other vulnerable young people. For example, the proportion of care leavers living in suitable accommodation has improved significantly and is now above that of similar councils and the England average.

However, they also identified a number of important weaknesses and areas for development:

- The proportion of young people with learning difficulties and/or disabilities and young parents who are not in education, training and employment is too high.
- The proportions of post-16 young people achieving Level 2 and Level 3 qualifications, at 64.2% and 38.6% respectively, are below those of similar councils.

What have we already done?

- A successful mediation service has been introduced whereby young people identified as homeless at 16 – 17 are automatically referred to mediation with Relate. This draws out family issues and seeks to place the young person, through negotiation, back in the family home wherever possible.
- A new Young People's Homelessness Prevention, Resettlement and Tenancy Sustainment Service has been commissioned. The operates a Monday to Friday service with weekend call-out to provide support for care leavers, young offenders and other vulnerable young people.
- An Employer Engagement Strategy has been developed and is currently under consultation. This strategy will allow us to help young people get into employment.
- Peterborough hosted a 'NEAT not NEET' conference, chaired by the MP for Peterborough, Stewart Jackson. Attendees included statutory agencies, housing associations, local businesses and voluntary sector organisations. Action Plans were developed during the 'NEAT not NEET' conference to address: Reaching Young People who are NEET; Youth Crime and Anti-Social Behaviour; Employer Engagement; and Young People's Achievement at all levels.
- A range of targeted programmes have been delivered with young people who are at risk of becoming NEET. This includes Change-It, the NEET projects and CLIPS.

- Over 2,000 students at Key Stage 3 have used 'Plan-it', the web-based tool that helps support students career and learning planning.
- We have increased capacity within the 14-19 team to deliver this challenging reform programme. We have been working with our partners to deliver our first range of Diplomas from September 2009. These will include: **Creative and Media; Society Health and Development; IT and Hair and Beauty**

A full report about the work that has been undertaken to ensure children and young people achieve economic wellbeing will be available in our Annual Report. This will be published on our website, www.peterborough.gov.uk/cypp.

What are our priorities and key areas of focus for 2009?

8: Children and young people achieve their potential and succeed economically

- Qualifications by age 19
- Reducing the number of young people not in education, employment and training (NEET), focusing upon those young people most vulnerable
- Delivery of 14-19 Agenda
- Transport
- Providing targeted support to children, young people and families in poverty

9: All young people have access to appropriate housing

- Housing for vulnerable young people, focusing upon care leavers, young offenders and teenage mothers

Who is responsible for improving Economic Wellbeing?

This outcome is owned by the Achieve Economic Wellbeing Partnership, which reports into the Children's Trust Partnership Board.

The Achieve Economic Wellbeing Partnership is co-chaired by the Partnership Director, Learning and Skills Council and Head of Young People's Service, Peterborough City Council. This partnership is responsible for ensuring that work is done to address the priorities and key areas of focus identified within the Children and Young People Plan.

The Achieve Economic Wellbeing Partnership will be publishing an Annual Workplan, which will explain what actions they will need to take that we make the improvements needed. This Annual Workplan will be published as part of our Annual report on our website at www.peterborough.gov.uk/cypp

In addition to the work of the Achieve Economic Wellbeing Partnership, other partnerships within the city will be important in delivering improvements in this area. In particular, the 14-19 Educational Planning Partnership will be leading the delivery of the important 14-19 reform agenda, which will fundamentally change the way young people access learning. In addition, several of the areas within Achieve Economic Wellbeing are included within our Local Area Agreement. These areas have key delivery plans which will be monitored by the Children's Trust and the Greater Peterborough Partnership.

You can find out more about these partnerships and their work at www.peterborough.gov.uk/cypp.

How will we measure if we're improving?

The Achieve Economic Wellbeing Partnership will be responsible for monitoring those national indicators relating to that aspect of children and young people's lives. In relation to the identified priorities and key areas of focus, they will be required to closely monitor the following national indicators:

- NI45 Young offenders engagement in suitable education, employment or training
- NI46 Young offenders access to suitable accommodation
- NI79 Achievement of a Level 2 qualification by the age of 19
- NI80 Achievement of a Level 3 qualification by the age of 19
- NI90 Take up of 14-19 learning diplomas
- NI116 Proportion of children in poverty
- **NI117 16 – 18 year olds who are not in education, training or employment**
- NI141 Number of vulnerable people achieving independent living
- **NI142 Number of vulnerable people who are supported to maintain independent living**
- NI 147 Care leavers in suitable accommodation
- NI148 Care leavers in employment, education or training

The indicators that are in bold, above, are some of the key indicators that are in our Local Area Agreement and have been jointly agreed as priorities between all partners in the city and central government.

As well as monitoring the national indicators, the Achieve Economic Wellbeing Partnership will continually review local information about the needs of children and young people to ensure that we respond to and tackle issues as soon as possible.

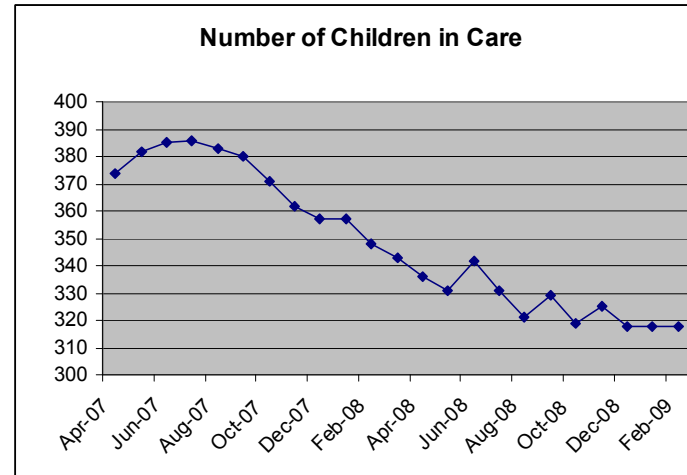
10 Vulnerable Children and Young People

Introduction

There are some children and young people in Peterborough who face particular challenges, making it harder for them to achieve the outcomes set out in this document.

Children and young people who are in care are some of the most vulnerable in Peterborough. We know they face many challenges and are more likely to end up committing crimes, less likely to achieve good exam results and less likely to find a job when they become an adult.

In February 2008, there were 318 children in the care of the local authority. This was a reduction from 386 in July 2007. However, as a rate of the total population, there are 82.9 children in care per 10,000 children, which is significantly higher than our statistical neighbours (69.3 in 2007/08) and the national average (54.1 in 2007/08). Their ages ranged from 19 who were under one year of age, to three who were over 16.



Children with disabilities and additional needs often require the support of a number of services to ensure that they have the highest possible quality of life. Information collected from health, social care and special educational needs data suggests that there are just over 1,800 children with disabilities in Peterborough:

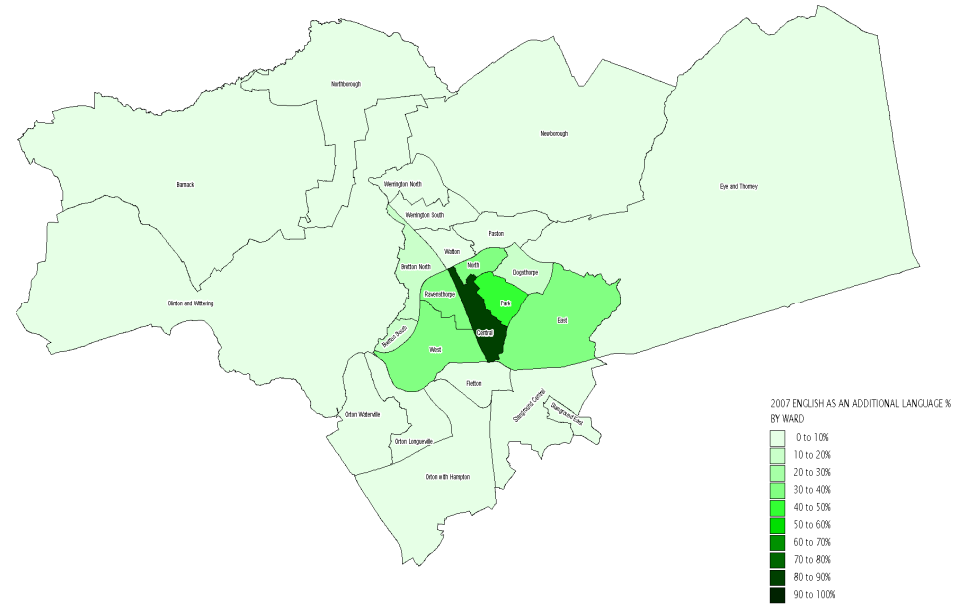
Age band	Number
0-5	605
5-16	1,017
Post-16	229
Total	1,851
Total 0-19 population	40,386
% with disability	4.6%

Children and young people from Gypsy and Traveller communities are at a greater risk of poor educational achievement than any other children. They are also at risk of other poor outcomes and can often be the victims of discrimination and bullying. Often, children from Gypsy and Traveller communities find it harder to access services than other children.

Young Carers face major challenges in their lives, often trying to balance their school work and own lives whilst caring for brothers, sisters, parents or other relatives. According to the 2001 census there were nearly 480 children in Peterborough aged 0-18 years who provided care, with 6% providing 50 hours or more. However, a report by Anglia Ruskin University into the needs of Young Carers in Peterborough suggested that there could be approximately 2,400 children and young people aged 5-16 who have not been formally assessed as young carers. Being a young carer can have an impact on education, finances and future aspirations and can lead to stress and worry.

There has been a large increase in the number of new arrivals to the city from abroad. Children who are new to the country face many challenges. Often they do not speak English very well and this means that they may have difficulty in school, or may feel isolated and find it hard to make friends. They often do not fully understand our culture, may find it hard to access services and do some of the things that we take for granted. New arrivals can offer a huge amount to the city culturally, economically and socially, but we need to ensure that there is the right support in place to help them.

There has been a steady rise in the numbers of pupils with English as an Additional Language (EAL) from 14.7% in 2003 to 19.4% in 2007. Most wards have experienced an increase in EAL and Central ward has 83.5% of its school population with EAL. Five other wards have over 30% with EAL needs.



Source: Peterborough PIES 2006

Our PIES education system records the first languages of children within our schools. It can provide a good indication of the numbers of languages spoken within our schools. The database records that 83 separate languages are spoken as first languages by students within our schools (not including separate dialects). The ten most commonly spoken languages are:

1. English
2. Punjabi
3. Urdu
4. Polish
5. Portuguese
6. Slovak
7. Lithuanian
8. Gujarati
9. Czech
10. Chinese

There are at least 24 different languages which are the first language for twenty or more students within our schools, and this figure is likely to be higher.

By offering the right kind of support for these groups we can make a big difference to their lives and give them the opportunity to achieve their potential

What have we already done?

- We have revised our Corporate Parenting Strategy, which sets out how we will promote and safeguard the welfare of all children in care through good quality care and education.
- Our Children in Care Council has been established and is going from strength to strength. Members have made a video to explain to staff who work with children what it is like to be a child in care. The CiC council were also featured in a recent edition of the local council paper, *Your Peterborough*.
- A new Head of Learning and Opportunity has been appointed in early 2009. His role will provide a lead for the education and wellbeing of all children in care in the city.
- Significant work has been undertaken through the Aiming High agenda to improve the availability of short break provision for children with disabilities and their families. We have held provider forums, conducted consultation events and set up a Parents' Forum to help develop our commissioning proposals for the coming year.
- We have been working to integrate our services for Children with Disabilities. A shadow management board has been set up with the aim of delivering integrated services from May 2009.
- We have identified a need to raise the attainment levels of children and young people who are minority ethnic new arrivals. A revised literacy framework has now been fully implemented in schools to support new arrivals.

- A protocol between Children's Services and the Primary Care Trust for Family Assessments is being developed through the Carers Steering group. This will help ensure that young carers are identified during assessments of the needs of adults.
- A survey has been conducted with schools to identify and provide support for young carers. Guidance about the needs of young carers has been developed and is being distributed to schools.
- Primary and secondary learning mentors have been appointed to support children and young people from Gypsy and Traveller communities and, in particular, provide support on the transfer between primary and secondary schools.

A full report about the work that has been undertaken to support vulnerable children and young people will be available in our Annual Report. This will be published on our website, www.peterborough.gov.uk/cypp.

What are our priorities and key areas of focus for 2009?

10: Vulnerable children and young people achieve the best possible outcomes

- New arrivals
- Children in Care
- Children with disabilities
- Young carers
- Children and young people from Gypsy and Traveller communities

Who is responsible for improving cross cutting issues?

All of our partnerships are responsible for ensuring that they consider the needs of these groups of children and young people

in all the work that they do. In addition, we have asked some of our partnerships to take a lead in co-ordinating services for each vulnerable group. These responsible partnerships are:

New Arrivals – **Enjoy and Achieve Partnership**

Children in Care – **Stay Safe Partnership**

Children with Disabilities – **Make a Positive Contribution Partnership**

Young Carers – **Make a Positive Contribution Partnership**

Children and Young People from Gypsy and Traveller communities – **Infrastructure Partnership**

How will we measure if we're improving?

Each of the partnerships will be responsible for monitoring both performance indicators and the delivery of key action plans. Key National Indicators include:

- **NI54 – Services for disabled children**
- NI58 – Emotional and behaviour health of looked after children
- NI99 Children in care reaching level 4 in English at Key Stage 2
- NI100 Children in care reaching level 4 in maths at Key Stage 2
- NI101 Children in care achieving 5 A*-C GCSEs (or equivalent) at Key Stage 4 (including English and maths)
- NI107 Key Stage 2 attainment for black and minority ethnic groups
- NI108 Key Stage 4 attainment for black and minority ethnic groups
- NI147 Care leavers in suitable accommodation
- NI148 Care leavers in employment, education or training

11. Infrastructure

Introduction

The only way that we will achieve the vision set out in this plan is to ensure that we deliver the right services, in the right way, at the right time. If we are to achieve this, we need to make sure we have the right infrastructure in place.

To deliver the best possible services, we need to have the best possible workforce. Workforce development is of central importance to the delivery of this plan. This is particularly important now, because we are changing the way we deliver services. For example, we have started joining up our services, with groups of professionals delivering in localities through children's centres and extended schools. We want to extend this approach, so that we have truly integrated services in the areas where they are needed. This requires a whole new way of working and so our staff will need to have the skills and knowledge to deliver in this new way.

We need to make sure we're spending our money wisely. Commissioning is all about getting the best service for our money, and is key to delivering value for money.

Integrated processes can make it easier and faster for children to access the services they need. We need to ensure that we have effective joined up governance – that our Children's Trust arrangements are working well and are making a difference to the lives of children and young people. Finally, we need to ensure that we are meeting our responsibilities with regard to equality and diversity.

What have our inspectors told us?

Every year, services for children and young people are inspected by Ofsted. In 2008, the inspectors identified a number of major strengths around Service Management:

- The council and its partners have a clear vision and a realistic set of priorities.
- A performance management system is in place and is beginning to improve performance and budgetary planning.

However, they also identified a number of important weaknesses and areas for development:

- Despite the implementation of several strategies and plans, many outcomes remain below those of similar councils and national averages.
- Progress towards joint commissioning and pooled budgets is relatively slow.
- Although gross expenditure on family support has increased, it remains at a lower proportion of the total budget than in comparable authorities.

What have we already done?

- We have conducted a thorough review of the partnerships that underpin the Children's Trust and have developed a more effective approach with clear accountability and effective governance arrangements.
- We have developed a revised Workforce Development Strategy, which will be presented to the Children's Trust Partnership Board in April 2009.

- We have developed a clear Strategic Commissioning Framework, which sets out how we will work together to jointly commission services, ultimately delivering better outcomes for children and young people.
- A project called 'Delivering through Localities' has been launched. This project will change the way services in Peterborough are delivered through more localised, co-ordinated services that respond directly to local need.

A full report about the work that has been undertaken to improve the infrastructure to support our delivery will be available in our Annual Report. This will be published on our website, www.peterborough.gov.uk/cypp.

What are our priorities and key areas of focus for 2009?

1: Deliver an effective infrastructure to ensure services can continue to improve outcomes for children and young people

- Equality and Diversity
- Joint Commissioning
- Workforce Development
- Integration of Services / Locality Working
- Governance
- Value for Money
- Integrated Processes

Who is responsible for improving infrastructure issues?

This outcome is owned by the Infrastructure Partnership, which reports into the Children's Trust Partnership Board.

The Infrastructure Partnership is co-chaired by the Assistant Director, Commissioning and Performance and Chief Executive of Young Lives.

This partnership is responsible for ensuring that work is done to address the priorities and key areas of focus identified within the Children and Young People Plan.

The Infrastructure Partnership will be publishing an Annual Workplan, which will explain what actions they will take to ensure that we make the improvements needed. This Annual Workplan will be published as part of our Annual report on our website at www.peterborough.gov.uk/cypp

How will we measure if they're improving?

There aren't any national performance indicators related to these areas. Instead, the Infrastructure partnership will be responsible for monitoring key milestones and action plans, to make sure that we are delivering the key policies, processes and activities that are needed to make a real difference.

12. Working together to deliver our plan

The Children and Young People Plan is the key document for all services who work with children, young people and their families in Peterborough. It is owned by the Children's Trust and it is only through working together that we will deliver the ambitious changes that we have set out.

The Children's Trust Partnership Board (CTPB) was launched in April 2008 and is chaired by the Director of Children's Services. Also sitting on the Board is the Lead Member for Children's Services, Cambridgeshire Constabulary, NHS Peterborough, Peterborough and Stamford Hospitals NHS Foundation Trust, Cambridgeshire and Peterborough Probation Service, Peterborough Safeguarding Children Board, Cambridgeshire and Peterborough Foundation Trust and the Learning and Skills Council. Three voluntary and community sector representatives from the Voluntary Sector Forum, Young Lives and Peterborough Racial Equality Council are also on the Partnership Board. Headteachers representing secondary schools, primary schools and special schools are members, as well as the chair of the Governor Reference Group.

The board has signed a formal Memorandum of Agreement, which sets out the way in which the board will work, including giving a commitment to sharing information and an agreement to move towards pooling resources and joint commissioning of services in order to improve outcomes.

In order to meet the requirements set out in section 10 of the Children's Act 2004, Peterborough's partnership structure has undergone a radical review. With the Children's Trust Partnership Board (CTPB) responsible for setting the strategic direction for all children's services, we have set up a series of 'Partnership

Groups' beneath it to ensure that the vision of the CTPB is delivered. These groups are based on the five outcomes from *Every Child Matters* in addition to a sixth group that focuses on infrastructure.

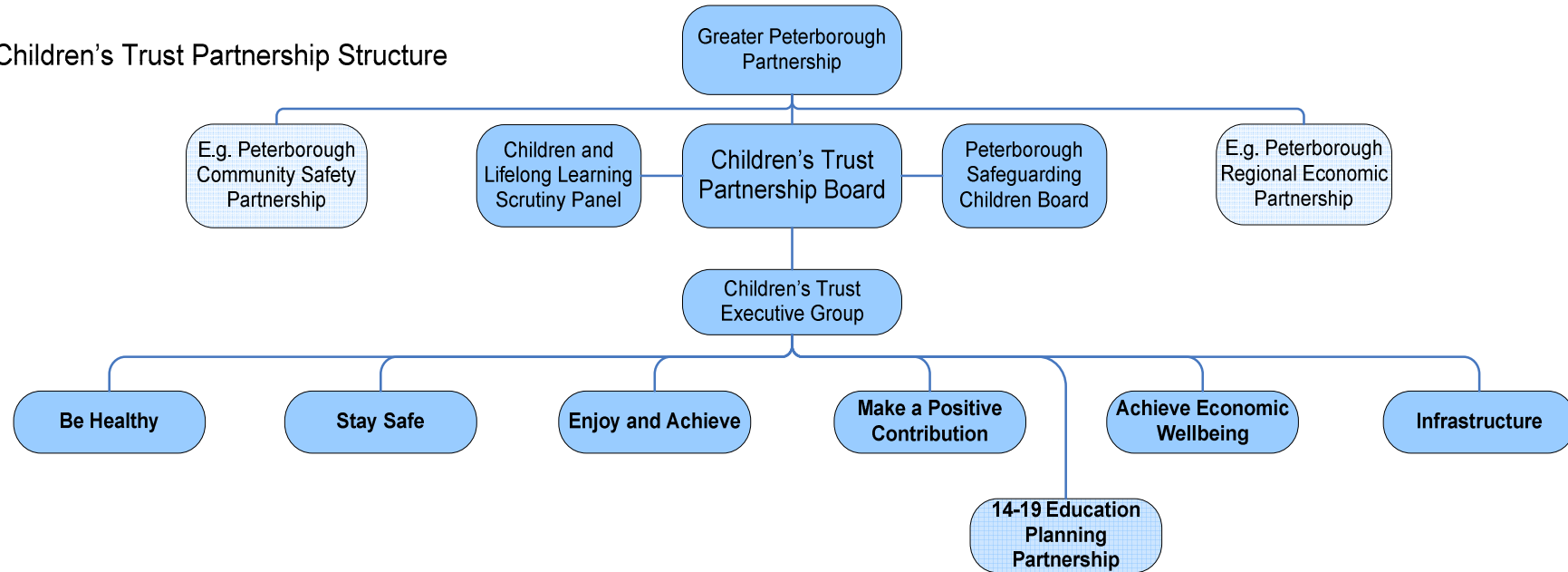
Sitting between the CTPB and its six Partnership Groups is the Children's Trust Executive Group. Its function is to ensure the Partnership Groups are making consistent progress towards their targets and that any problems get dealt with quickly and effectively.

Finally, to reflect the importance of the 14-19 agenda in leading the transformation of learning in the city, the 14-19 Educational Planning Partnership will feed directly into the Children's Trust Executive Group. This group is co-chaired by the Assistant Director for Resources and the Programme Director for 14-19 and Phase 2 of the Secondary School Review from Children's Services, Peterborough City Council.

The Children's Trust Partnership Board is one of several partnerships that sit within the wider Greater Peterborough Partnership (GPP) structure. The GPP is the overarching partnership for all of Peterborough and owns Peterborough's Sustainable Community Strategy, the key strategy for the whole of the city. To find out more about the GPP and Peterborough's Sustainable Community Strategy, please see <http://www.gpp-peterborough.org.uk/>

A diagram showing the new partnerships structure can be found below:

Children's Trust Partnership Structure



The partnerships that sit beneath the Children's Trust will all have a written 'contract' with the Children's Trust Partnership Board, clearly setting out the expectations for the group and the areas that they are responsible for monitoring, challenging and delivering. They will all be required to produce Annual Workplans, setting out how they will deliver the priorities within the Children and Young People Plan. These will be available at our website: www.peterborough.gov.uk/cypp.

In addition to the Partnership workplans, there are a number of key strategies, plans and projects that will all contribute to the delivery of our Children and Young People Plan. Several of these partnerships, such as the Cohesion Board, the Safer Peterborough Partnership and Peterborough Safeguarding Children Board have been mentioned throughout this document. The Greater Peterborough Partnership have agreed Local Area

Agreement action plans which will see joint action taken to address the key areas of priority within the city. Finally, there are a number of key projects which we know we need to deliver. These include the Aiming High Short Breaks project, the integration of services for Children with Disabilities and the Delivering through Localities projects. The partnerships that underpin the Children's Trust must ensure that they are fully engaged with all these projects, plans and partnerships to ensure that we address our shared priorities in a co-ordinated and effective way.

Finally, a key way in which the Children and Young People Plan will be delivered will be through commissioning. Commissioning is the process by which we decide which services are bought and incorporates analysing need, consulting with children and young

people, identifying what services are required and purchasing services to meet the needs that have been identified.

Effective commissioning can lead to better value for money by pooling resources and aligning services to match the needs of children and young people.

The Children's Trust Partnership Board has agreed a Strategic Commissioning Framework and is building a Commissioning Team within the City Council Children's Services department to support and enable the commissioning process.

The Strategic Commissioning Framework will be available on our website at www.peterborough.gov.uk/cypp. The framework sets out the key priorities for commissioning in Peterborough. In brief, they are:

- Teenage pregnancy and sexual health
- Child and Adolescent Mental Health Services (CAMHS) and emotional health
- Community health services
- Obesity
- Substance misuse (drugs and alcohol)
- Children with disabilities
- Tier 4 placements (for children and young people with the most complex needs)
- Targeted youth support
- Youth offending
- Parenting support

Community Languages

Please contact us on 01733 747474 if you require this information in: large print, CD, audiotape or Braille or another language.

CZECH

“Laskavě nám zavolejte na 01733 747474 v případě, že tyto informace potřebujete: vytištěné větším tiskem, na kompaktním disku, na pásce, v Braillově slepeckém písmu nebo v jiném jazyce.”

LITHUANIAN

“Prašome susisiekti su mumis 01733 747474 jeigu jums yra reikalinga informacija: dideliu šriftu, CD, garsajuostėje, Braille ar kitomis kalbomis.”

POLISH

“Prosimy o skontaktowanie się z nami pod numerem 01733 747474, jeżeli niniejsza informacja potrzebna jest w wydaniu: dużym drukiem, na płycie CD, na kasecie audio, w języku Braille’a lub w innym języku.”

PORTUGUESE

Por favor, contacte-nos através do tel.: 01733 747474 se necessitar desta informação em letras maiores, CD, cassette áudio, Braille, ou noutro idioma.

RUSSIAN

“Пожалуйста, обращайтесь к нам по телефону 01733 747474 если вам требуется эта информация: крупным шрифтом, на диске, на аудиокассете, шрифтом Брайля или на другом языке.

SLOVAKIAN

Kontaktujte nás na tel. čísle 01733 747474 ak potrebujete uvedené informácie: vytlačené veľkým písmom, na CD, na audiokazete, v slepeckom písme alebo v inom jazyku.

Tell us what YOU think

Thank you for taking the time to read this document. We hope that you have found it interesting. If you have any comments or suggestions for improvements, we would love to hear them. Please complete the attached form and return it free of charge to: Children's Services, Peterborough City Council, FREEPOST NAT7922, Peterborough, PE1 1BR.

Comments

.....
.....
.....
.....
.....
.....
.....
.....

Name (optional):

.....

Contact Details (optional)

.....
.....
.....
.....

For more information about anything within the Children and Young People Plan, please see our website at www.peterborough.gov.uk/cypp or email us at childrenstrust@peterborough.gov.uk